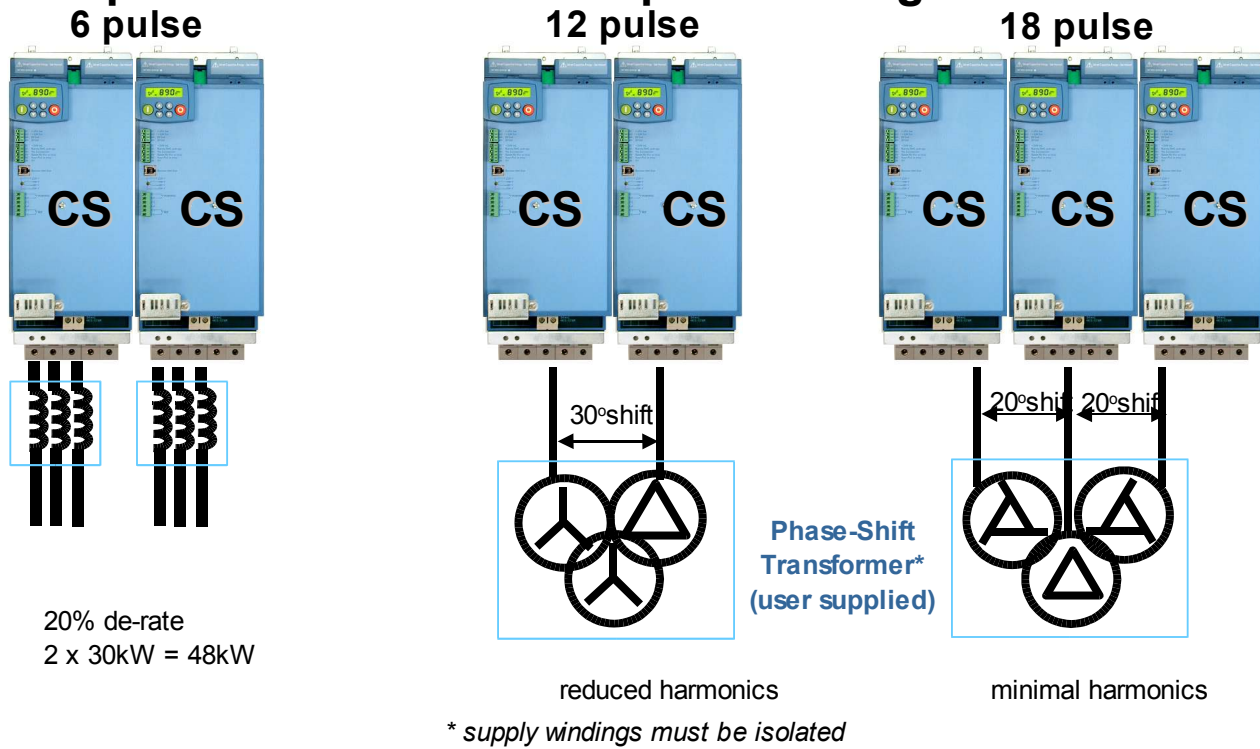


Input Power Configurations

Parallel Input Modules and multi-pulse configurations



Typical 30kW (40HP) Line-Regenerative System



Frames

Amps*	2A	3A	6, 12, 18A	24A, 30A	45A, 59A	60-89A	87-180A	216-316A	261-480A	500-590A
HP @ 230V	0.3 HP	0.5 HP	2-5 HP	7.5-10 HP	—	15-30 HP	40-60HP	—	—	—
HP @ 460V	—	—	3-10 HP	15-20 HP	25-40 HP	50-60 HP	75-150 HP	175-250 HP	300-400 HP	450-550 HP
kW @ 380V	250W	380W	2.2-7.5 kW	11-15 kW	18-30 kW	37-45 kW	55-90 kW	110-160 kW	180-250 kW	280-350 kW

* Constant Torque amp ratings have 150% OL for 60 seconds

For more information contact:

Eurotherm SSD Drives Inc.

9225 Forsyth Park Drive
Charlotte, NC 28273

ph: 704 588 3246

fax: 704 588 4806

www.eurothermdrives.com

HA xxxxxxxx



Modular AC Drives
for Systems



outside
the box
thinking...

...outside
the box
savings

AC V/F, VECTOR AND SERVO CONTROL

COMMON BUS RECTIFIERS AND INVERTERS

COORDINATED SYSTEM CONTROL





One Drive Fits All

Control and Option Boards

Induction motors

Velocity and Torque Control

V/Hz
Open Loop
Induction motor



Sensorless
Vector
Open Loop
Induction motor



Flux Vector
Closed Loop
Induction motor



CONSTANT TORQUE RATED
150% OL 60 sec.

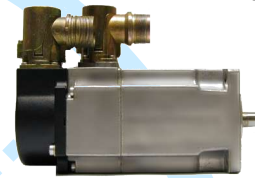


Servo motors

Motion and Position Control

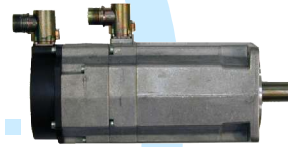
Brushless AC

PM synchronous
Closed Loop



Brushless DC

PM synchronous
Closed Loop



AC Induction Servo

Async Induction
Closed Loop



SERVO RATED
200% OL 4 sec.

ONE MAIN CONTROL BOARD

LOW COST PER NODE

CONTROL BOARD

- V/Hz,SV,Vector
- Servo control
- On-board I/O

FEEDBACK CARD

TYPES

- Resolver card
- Encoder card types:
 - enDat (sin/cos)
 - hipurface (sin/cos)
 - incremental encoder

DIRECT PROCESSING COMMUNICATIONS

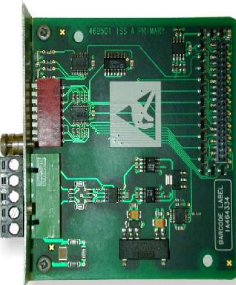
- HIGH SPEED
- LOW COST

- Expansion I/O card
- Follower board (encoder and resolver types)



- DeviceNet
- Profibus
- ControlNet
- Firewire
- Ethernet
- ModBus

FIELD BUS COMMS



890 is the drive for a wide range of motor types and sizes, through easy to use, predefined parameter set-up macros

No Matter What Your Application.....

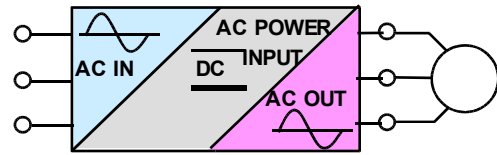
The 890 Drive is The Right Solution!





Available in Two Styles

Space and Cost Savings



a complete AC-input-to-AC motor output controller complete with power input and output terminals, and access to all feedback and networking options

Complete Drive



1 - 10 HP
.75 - 7.5 KW
15 - 20 HP
11 - 15 KW
25 - 40 HP
18 - 30 KW

COMMON BUS

Supply Section



25 - 50 HP
15 - 30 KW
75 - 130 HP
60 - 90 KW

Drive Section

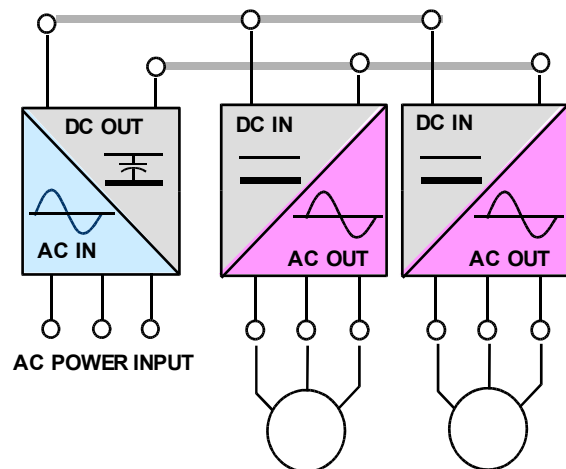


1 - 10 HP
.75 - 7.5 KW
15 - 20 HP
11 - 15 KW
25 - 40 HP
18 - 30 KW



Common Bus Drives (CD) are individual motor output sections that easily connect to a Common Bus Supply (CS) with a unique, easy-to-install DC busbar system

- Integral fusing provides branch protection
- No power interlocks or input reactors required
- Each CD provides access to all feedback and networking options

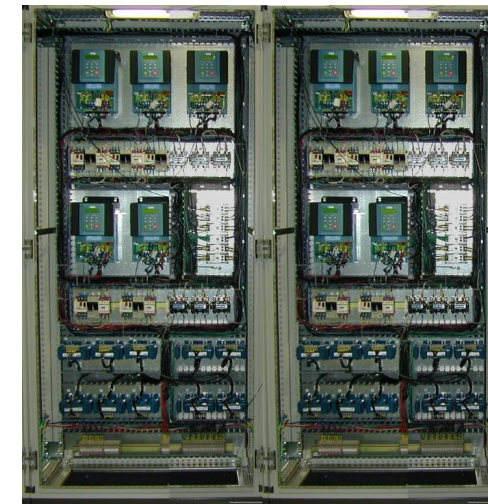


Example Common Buss Setup



Simple Common Bus Connection for Quick Installation.

CONVENTIONAL DRIVE SYSTEM



10-Drive System

30% Cost Savings

- ✓ ENCLOSURE SIZE
- ✓ ENGINEERING
- ✓ WIRING
- ✓ COMPONENTS
- ✓ SWITCHGEAR

50% Space Reduction

AC890 MODULAR DRIVE SYSTEM



10-Drive System

Eliminates the Need For Individual:

- Circuit Breakers
- Fusing
- Line Reactors
- Interlocking Contactors
- Other conventional items in a common buss system.



Configuration and Monitoring



890 Architecture Infinite Possibilities

DSE 890 Drive System Explorer

fast-and-easy
project
creation and
online
monitoring

Set up parameters & create projects

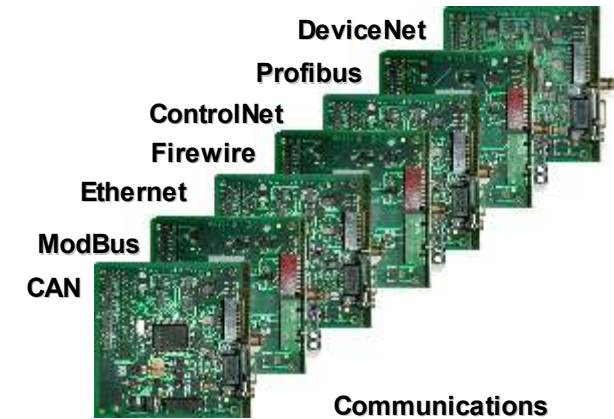
Drag-and-drop application blocks

Chart variables on-line

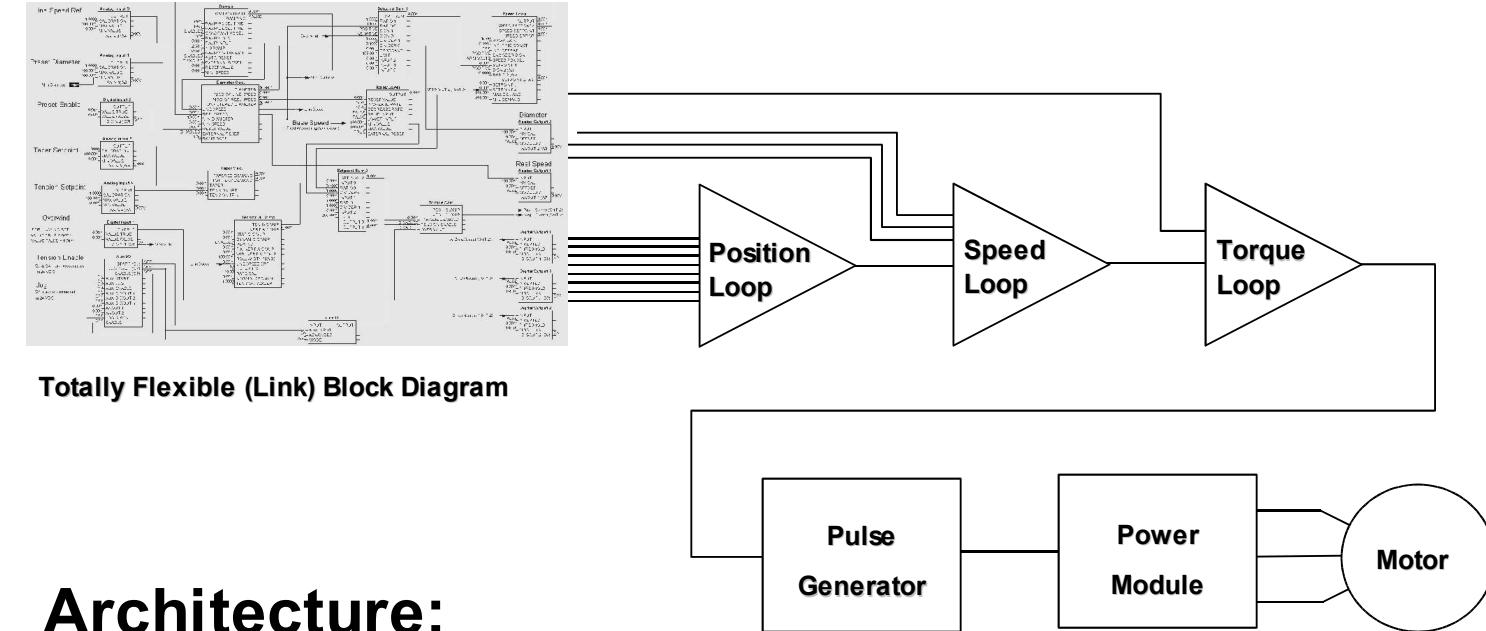
Monitoring and on-line tuning



Application (Processor)



Communications



DSE Provides:

- Graphical Interface
- Over 400 Link Function Blocks Available
- 11 Pre-configured Macros
- Quick Setup
- Charting/Oscilloscope

Architecture:

- 32 bit architecture
- Multiple Configuration Interface
- Graphical Programmability
- Object Oriented Software
- Fully Deterministic